

Solar Tiles
1201-2021



PRODUCTION_SENTAENERGY CO., LTD
TRADING_SENWA ENERGY CO., LTD
TECHNOLOGY_SENNA TECH. CO., LTD

Ⓜ : www.sentaenergy.com
☎ : +86-510-8359 2969
✉ : sales@sentaenergy.com
📍 : RM. 501, Bld. 1, No. 33 Zihui Road, Huishan District, Wuxi, China
📠 : 214174

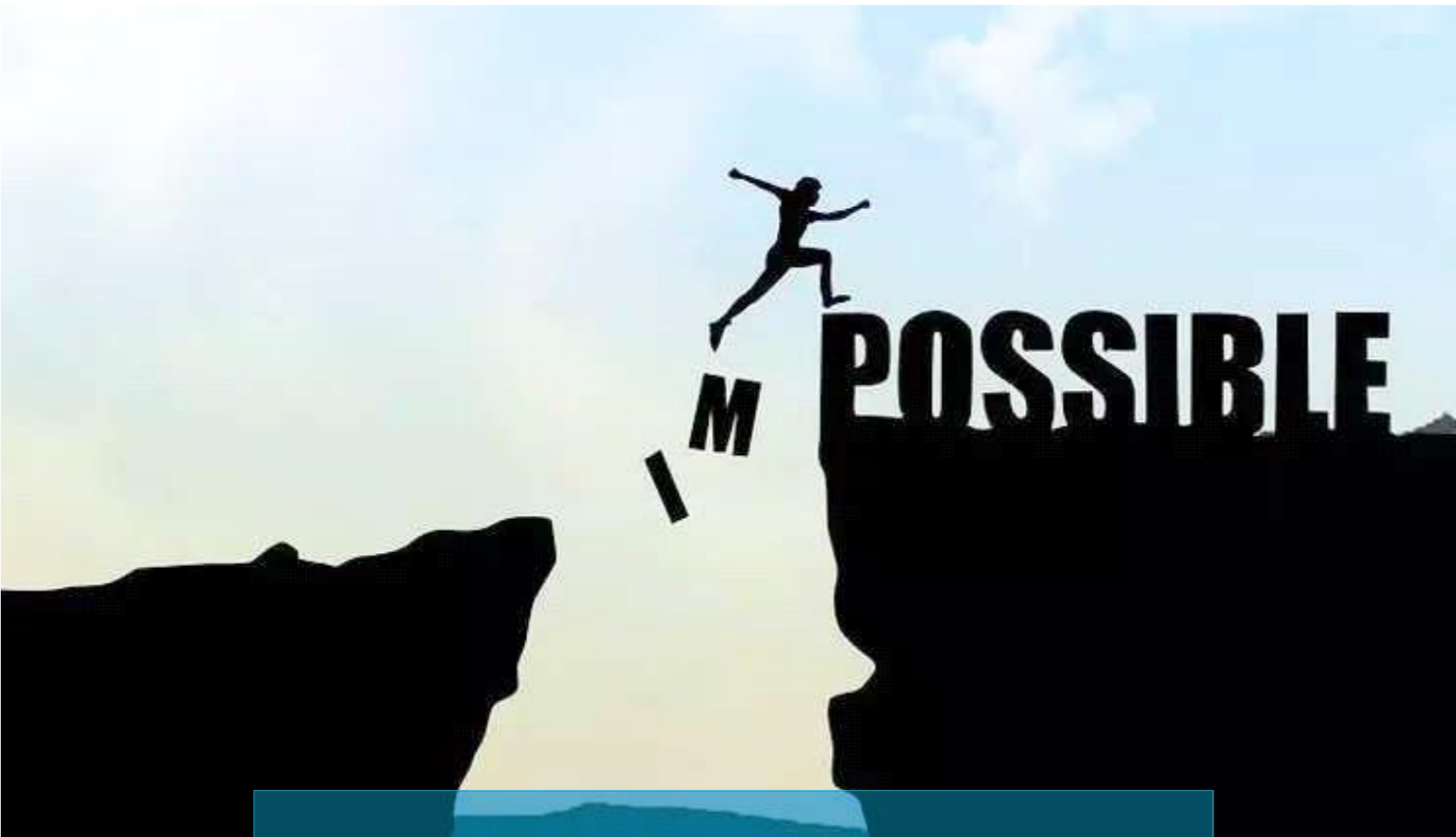


WeChat Official Account

RELIABLE & EFFICIENT COME FROM **SENTA**



IMPOSSIBLE = I'M POSSIBLE



Innovative, Empowering, Reliable, Efficient!

Strategy: New Energy, New Architecture, New Agricultural

Positioning: To be the Innovator of new energy, Innovator of newbuilding and Pioneer of new agriculture

Mission: Striving to build an "Ecological home and Smart house"!

Vision: Do ecosystem industry, let Senta accompany for life!

Purpose: Green/ clean/ sustainable as the concept; Efficiency/ quality/ integrity as the core; Convenient/ service/ benefit as the source; Truth-seeking/ innovation/ enterprising as the force;

Head Office



Senta Energy Co., LTD. headquartered in Huishan Economic Development Zone, Wuxi city, Jiangsu Province, is a technology-based company with new energy (solar, storage) business as the basis, new building (assembly house, container house) and new agriculture (soilless cultivation) business as the strategic reserve, and independent research and development, manufacturing, sales and service as one. Our main Business include but not limit:

PV Solar Power- The product R&D, manufacturing and sales of solar power and battery storage, solar system EPC;

Assembly Building - The product R&D, manufacturing and sales of house and smart home, intelligent building system;

Soilless Culture - The promotion, application and implementation of new agriculture mode, the development, design and sales of soilless culture.

At present, our company has applied for more than 20 national trademarks and Copyrights, 1 international trademark, 15 patents and 5 soft works. With TUV, CE, ISO and other international certification; It has been awarded "National High and New Technology Enterprise", "Private Science and Technology Enterprise of Jiangsu Province", "Small and Medium-sized Technology-based Enterprise", "Eyas Class III Enterprises", etc.

Manufacturing Base

The domestic production base is located in Xishan District, Wuxi, covering an area of more than 2500 square meters, with two solar module automatic production lines and an assembly line, focusing on small and medium-sized solar module production, photovoltaic power generation and energy storage system application product integrated assembly, product customization solutions, etc. Our products are exported to Europe, America, Southeast Asia, Middle East and other countries and regions, and win wide praise from global customers. The company has more than 10 years of experience in photovoltaic module production management and technology, integrating surrounding photovoltaic supply chain resources, ensuring delivery time and supply capacity, and constantly improving product cost performance.

Cooperation overseas production base is located in Quebec, Canada Montreal, component automatic production line with 200MW and 100MW solar cell production line, as one of the biggest local components manufacturers, the products are mainly exported to the United States and South America, etc., has a complete industrial chain and a powerful service system, the company's products have CSA, CE and other international certifications.



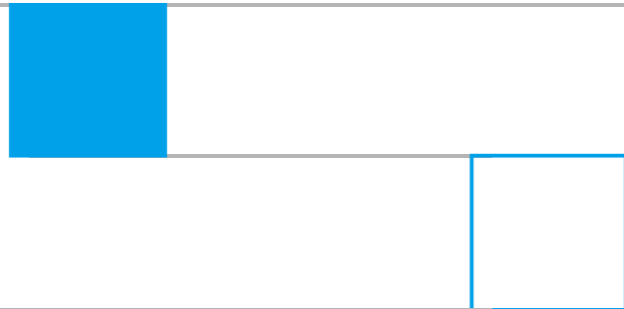
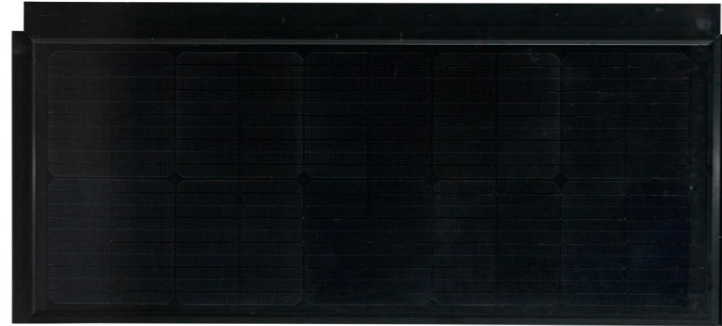
[Introduction] Solar tile is a new-style and high-end building materials, combine the function of traditional tile and solar PV, it can install on roof directly, match the building perfectly. The life span can reach 30~50 years, and high efficiency, good thermal insulation. The mainstream production is Hanergy Solar Tile.

[Application] Solar tiles are applicable to newly built or rebuilt houses (villas, new rural areas), public houses (schools, hospitals, grain depot, high-way service area), etc.

1. SEN Tile

[Introduction] There are three versions of Sentele, V1.0 is single glass type with 158.75 solar cells, V2.0 is single glass type with 182 solar cells, V3.0 is double glasses type with 210 solar cells. Senta patented tile frames and special array to make highest efficiency and more power output.

[Pros & Cons] Waterproof, thermal insulation, fireproof and safety, high efficiency, lightweight, colorful, half cells with lower current, quick connection and adjustable frames, moreover the price is reasonable and competitive; But single glass is not so stronger as double glasses.



2. HAN Tile

[Introduction] Hantile with CIGS thin film solar cells encapsulated in curved glass and polymer composite materials, combined with the form of traditional roof tiles, create a new green building materials, can fully replace the traditional roof tiles as energy-saving building materials.

[Pros & Cons] Waterproof, thermal insulation, excellent appearance, also changes the building's dependence on external energy, making zero energy building possible; But it is too heavy for weak roof, and not easy carry or replace, efficiency is not so high as silicon cells, and the price is so high to acceptable.



3. EVO Tile



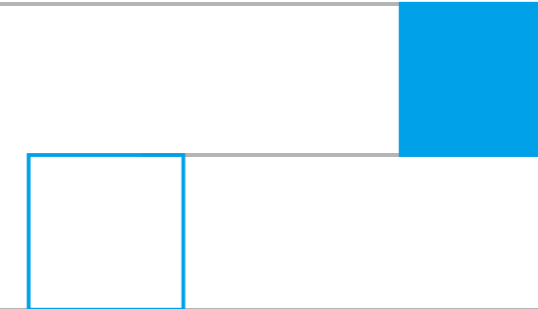
[Introduction] Evotile is made of double glasses, V1.0 is flat one and V2.0 is wave type similar to Hantile, it can match with someone who prefer wave tile roof and also need reasonable prices, double glasses tiles are stronger enough for people walk on it directly.

[Pros & Cons] Waterproof, thermal insulation, fireproof and safety, PVB materials to avoid peeling off, colorful, and reasonable prices; But it is too heavy for weak roof, and not easy to carry or replace, connection frames cannot adjustable well.

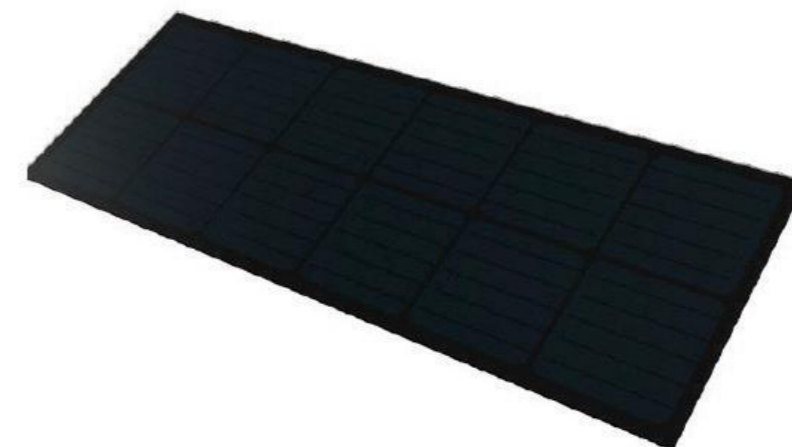
4. HED Tile

[Introduction] Hedtile is made of ceramic frames with more colors to choose, it is much stronger even car drive on it, the wave part with flat area are specially same as traditional tiles, small size and easier for installation, can match with roof perfectly.

[Pros & Cons] Waterproof, thermal insulation, fireproof and safety,



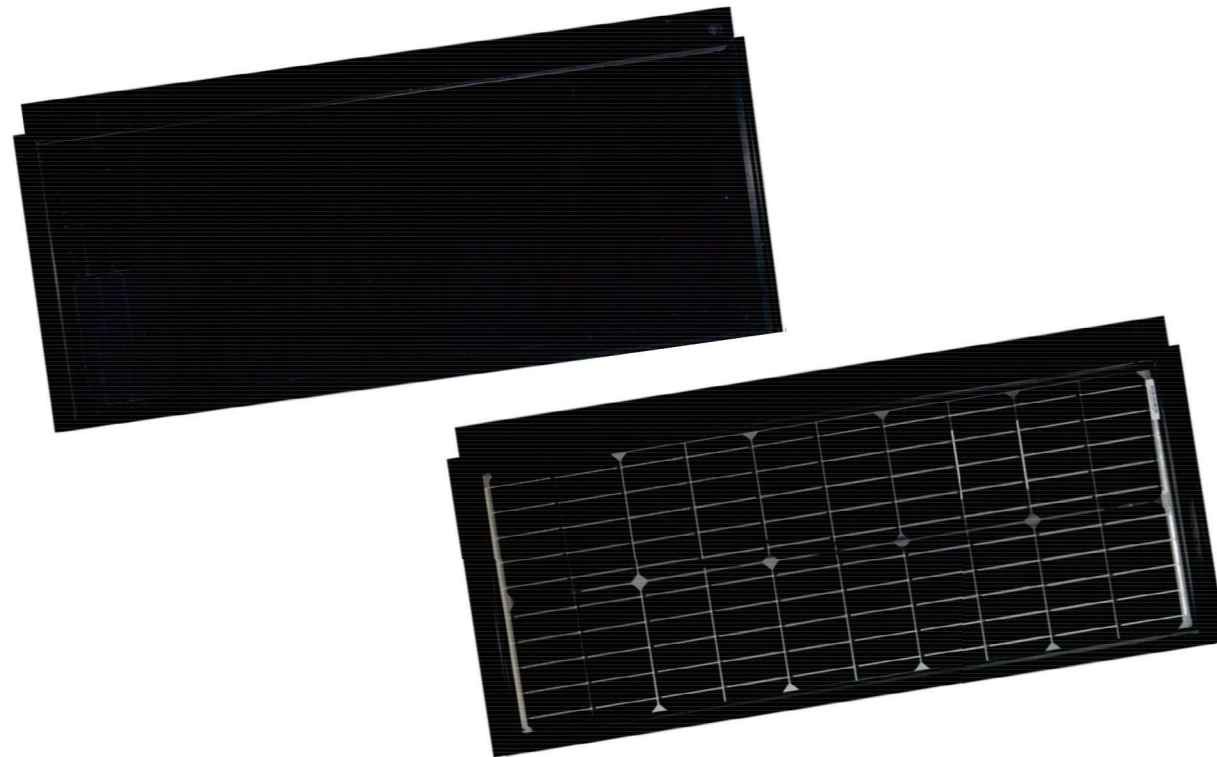
5. DAI Tile



[Introduction] Daitile is also flat type with double glasses, and put silicon solar cells to guarantee the high power, it can be used as marble for wall also, Special surface texture, low reflection and easy to clean.

[Pros & Cons] Daitile has composite design, drainage, ventilation and heat insulation, special surface texture, low reflection and easy to clean, high efficiency photovoltaic cells, clean, green and energy saving, high strength light quality, corrosion resistance long life; But the weight is also heavy and price is high enough.

Monocrystalline & Full Black



Features

- The professional design in waterproof, resist of windstorm & hail
- Low voltages and fireproof materials can prevent any possibility of fire
- Lifespan is over 30 years with reliable encapsulating materials
- Decrease temperature 5~9°C on rooftop with solar tiles
- PID free, yield-optimized low-light performance
- Lightweight, compact and simple to install
- Install on original roof or to be part of it

Accessories

- Sunk screw: M4.8x30mm
- Sub structure: Wooden slats/steel tubes

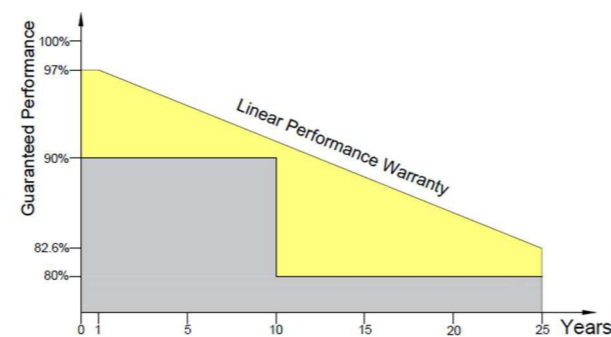
Matching tiles

- Glass type (Uncuttable)
- PC type (Cutttable)



10
Years
Materials

25
Years
Power



Relative efficiency level, at least 97% after first year, annual degradation max.0.6% afterward, at least 91.6% after 10years, and 82.6% after 25years.

Electrical Performance(STC:AM 1.5, 1000W/m², 25°C)

Module Type	ST055M6-20C	ST110M6-36C
Max. Power (Pmax / Wp)	55	110
Power Tolerance	0 ~ +3%	0 ~ +3%
Max. Power Voltage (Vm / V)	11.2	22.4
Max. Power Current (Im / A)	4.92	4.92
Open Circuit Voltage (Voc / V)	13.4	26.8
Short Circuit Current (Isc / A)	5.18	5.18
Module Efficiency (%)	14.26	16.25
Aarry Efficiency (%)	17.49	18.26

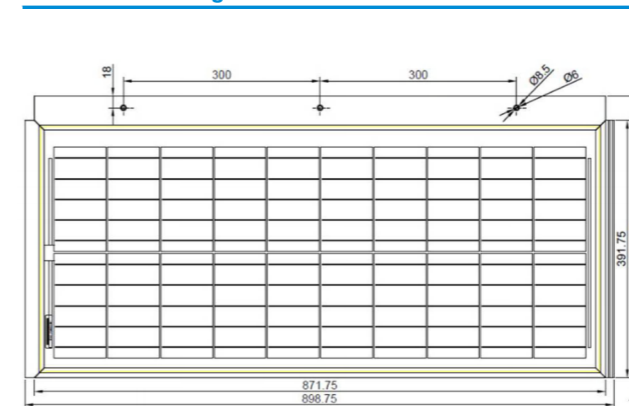
Thermal Properties

Nominal Operating Cell Temp.	45±2 °C
Temperature Coefficient Voc	-0.26%/°C
Temperature Coefficient Isc	+0.056%/°C
Temperature Coefficient Pm	-0.36%/°C

Operation Conditions

Operating Temperature	-40 ~ +85 °C
Max. System Voltage	1000 V
Max. Series Fuse Rating	10 A
Max. Wind & Snow Loads	2400 Pa 5400 Pa
Hail Resistance Class	Class 4 (Ø 40mm at 23m/s)
Application Class	Class A
Fire Safety Class	Class C (IEC61730)

Technical Drawing



Mechanical Properties

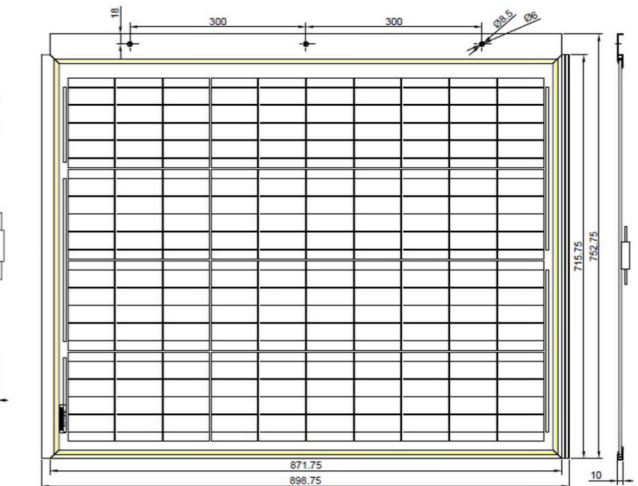
Product Dimensions (mm)	899×429×10	899×753×10
Array Dimensions (mm)	886×355	886×680
Roof Batten Distance (mm)	355~375	680~700
Roof Batten Size (mm)	W & H≤40	
Array Head-lap Size (mm)	50~75	
Weight (Kgs)	3.8	7.2
No. of Cells	20 (2×10)	40 (4×10)
Solar Cells	Monocrystalline 158.75×79.37	
Glass	3.2mm tempered glass	
Frame	Anodized aluminum/Black	
Encapsulation	EVA (UV+/IR+)	
Junction Box	IP 67, 1/2 bypass diodes	
Cable & Connector	2.5mm ² , 50cm, MC4 compatible	
Roof Pitch Range (°)	15~60	
Units Per Sqrm (pcs/m ²)	3.18	1.66
Power Per Sqrm (Wp/m ²)	175	183

Packing Configuration

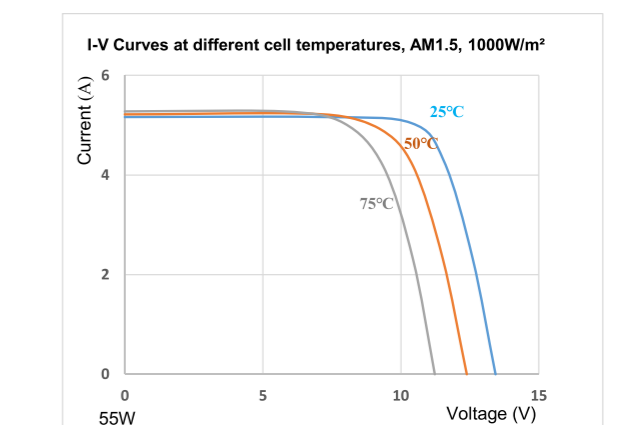
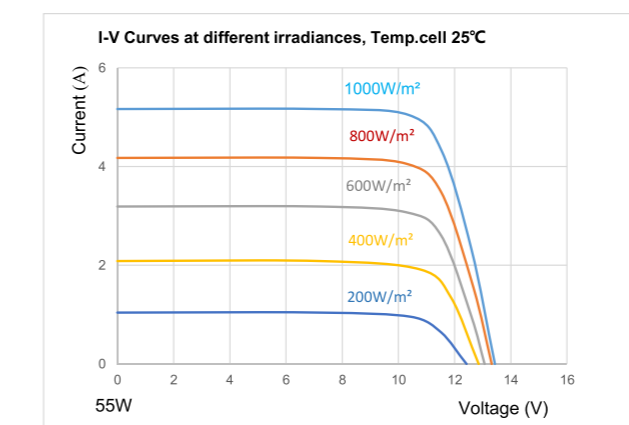
Container Size	20GP	40HQ
Pieces/pallet	50	50
Pallets/Container	40/24	96/48
Pieces/Container	2000/1200	4800/2400

Notes

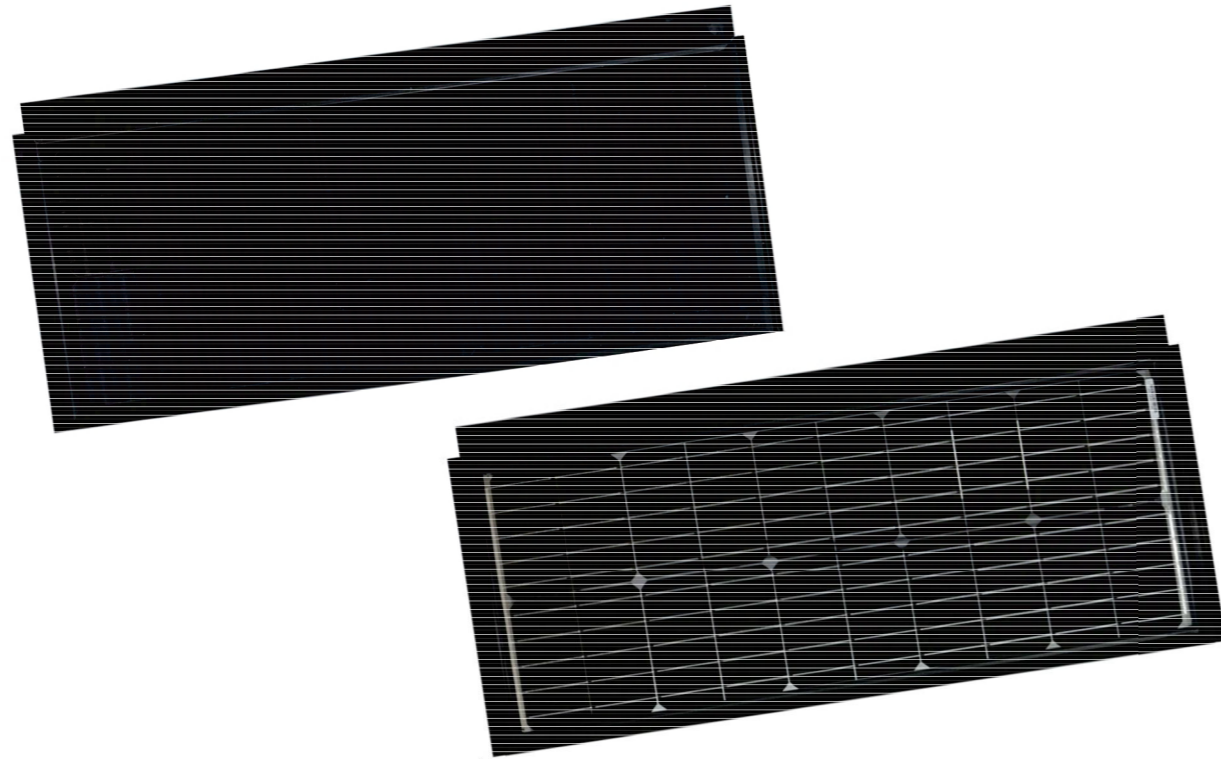
ST055M6-20C-SGXH/V, X=B-Black/W-White/T-Transparent, H-Horizontal, V-Vertical



I-V Curves



Monocrystalline & Full Black



Features

- The professional design in waterproof, resist of windstorm & hail
- Low voltages and fireproof materials can prevent any possibility of fire
- Lifespan is over 30 years with reliable encapsulating materials
- Decrease temperature 5~9°C on rooftop with solar tiles
- PID free, yield-optimized low-light performance
- Lightweight, compact and simple to install
- Install on original roof or to be part of it

Accessories

- Sunk screw: M4.8x30mm
- Sub structure: Wooden slats/steel tubes

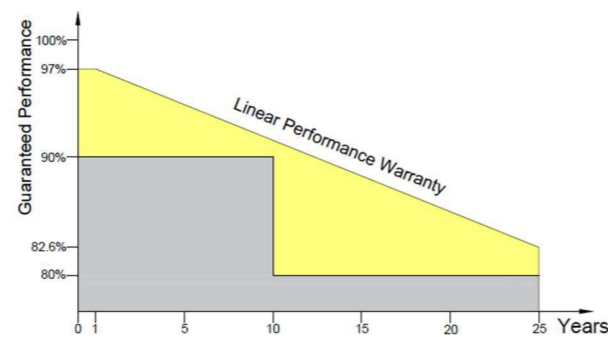
Matching tiles

- Glass type (Uncuttable)
- PC type (Cutttable)



10
Years
Materials

25
Years
Power



Relative efficiency level, at least 97% after first year, annual degradation max.0.6% afterward, at least 91.6% after 10years, and 82.6% after 25years.

Electrical Performance(STC:AM 1.5, 1000W/m², 25°C)

Module Type	ST045M6-20C	ST075M6-36C	ST110M6-36C
Max. Power (Pmax / Wp)	45	75	110
Power Tolerance	0 ~ +3%	0 ~ +3%	0 ~ +3%
Max. Power Voltage (Vm / V)	7.0	11.7	17.1
Max. Power Current (Im / A)	6.45	6.45	6.45
Open Circuit Voltage (Voc / V)	8.1	13.6	19.8
Short Circuit Current (Isc / A)	6.78	6.78	6.78
Module Efficiency (%)	15.28	15.51	16.38
Array Efficiency (%)	17.7	18.63	18.70

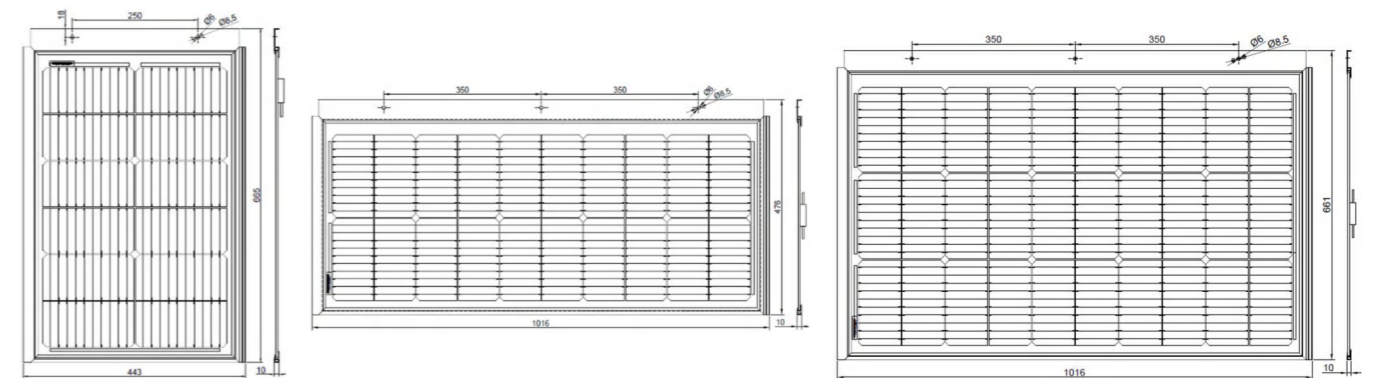
Thermal Properties

Nominal Operating Cell Temp.	45±2 °C
Temperature Coefficient Voc	-0.30%/°C
Temperature Coefficient Isc	+0.06%/°C
Temperature Coefficient Pm	-0.39%/°C

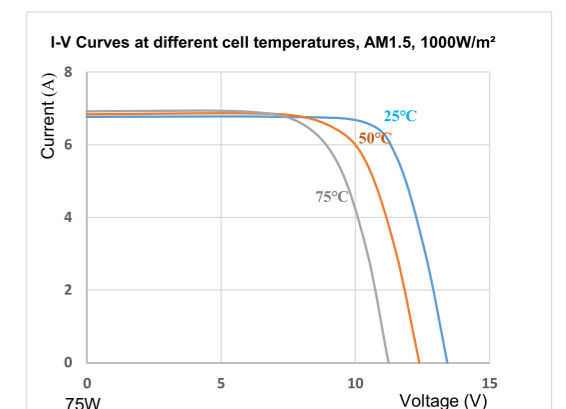
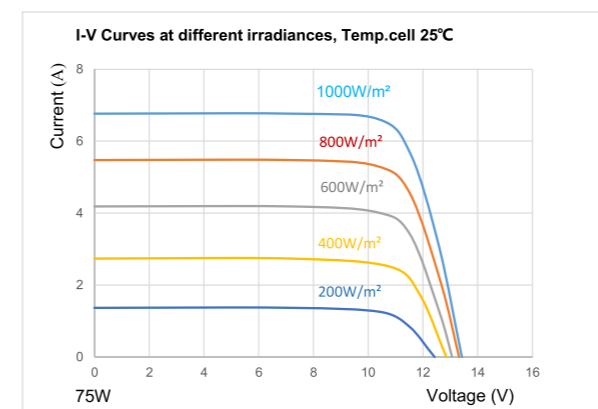
Operation Conditions

Operating Temperature	-40 ~ +85 °C
Max. System Voltage	1000 V
Max. Series Fuse Rating	10 A
Max. Wind & Snow Loads	2400 Pa/5400 Pa
Hail Resistance Class	Class 4 (Ø 40mm at 23m/s)
Application Class	Class A
Fire Safety Class	Class C (IEC61730)

Technical Drawing



I-V Curves



Mechanical Properties

Product Dimensions (mm)	665×443×10	1016×476×10	1016×661×10
Array Dimensions (mm)	590×431	1004×401	1004×586
Roof Batten Distance (mm)	590~610	401~421	586~606
Roof Batten Size (mm)	W & H≤40		
Array Head-lap Size (mm)	55~75		
Weight (Kgs)	2.8	5.3	8.1
No. of Cells	12 (2×6)	20 (2×10)	30 (3×10)
Solar Cells	Monocrystalline 182×91		
Glass	3.2mm tempered glass		
Frame	Anodized aluminum/Black		
Encapsulation	EVA (UV+/IR+)		
Junction Box	IP 67, 1 bypass diodes		
Cable & Connector	2.5mm², 60cm, MC4 compatible		
Roof Pitch Range (°)	15~60		
Units Per Sqrm (pcs/m²)	3.93	2.48	1.7
Power Per Sqrm (Wp/m²)	176.8	186	187

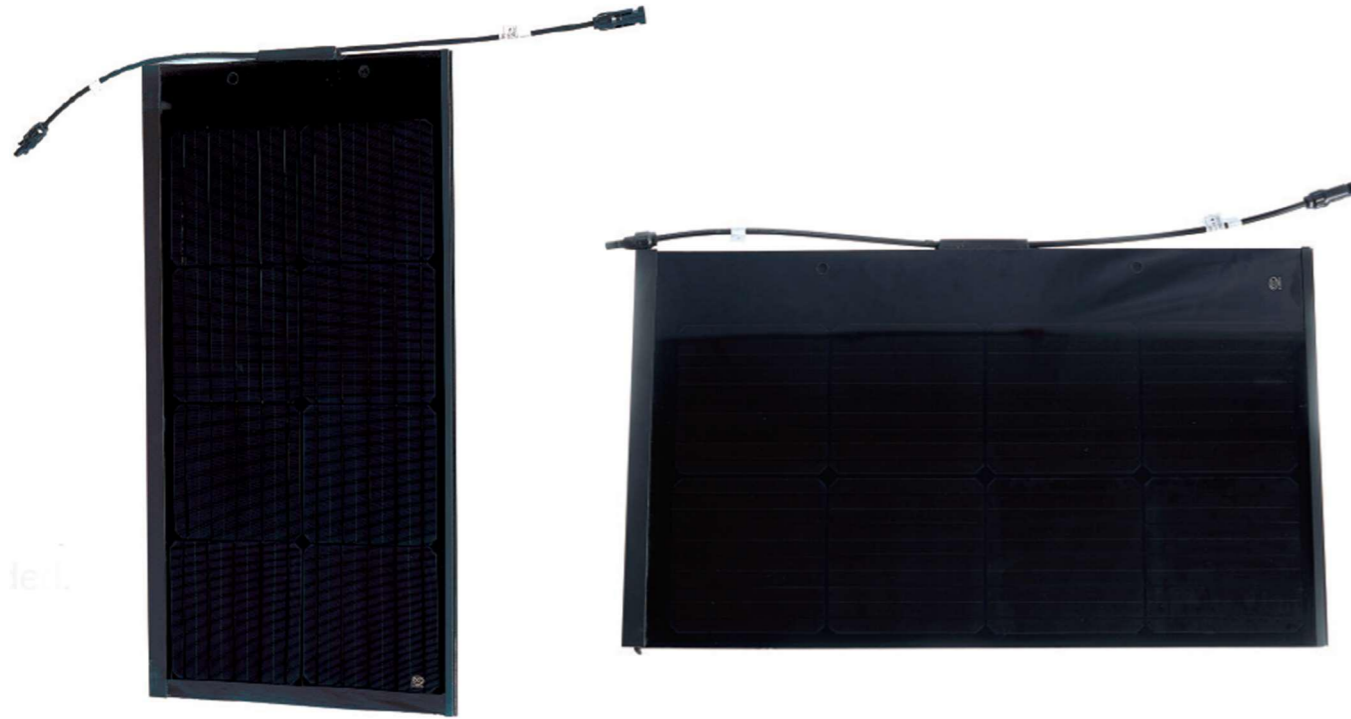
Packing Configuration

Container Size	20GP	40HQ
Pieces/pallet	100/50/(50+24)	100/50/50
Pallets/Container	24/30/(20+10)	48/66/66
Pieces/Container	2400/1500/1240	4800/3300/3300

Notes

ST045M6-20C-SGXH/V, X=B-Black/W-White/T-Transparent, H-Horizontal, V-Vertical

Monocrystalline & Full Black



Features

- The professional design in waterproof, resist of windstorm & hail
- Low voltages and fireproof materials can prevent any possibility of fire
- Lifespan is over 30 years with reliable encapsulating materials
- Decrease temperature 5~9°C on rooftop with solar tiles
- PID free, yield-optimized low-light performance
- Double glasses, compact and simple to install
- Install on original roof or to be part of it

Accessories

- Sunk screw: M4.8x30mm
- Sub structure: Wooden slats/steel tubes

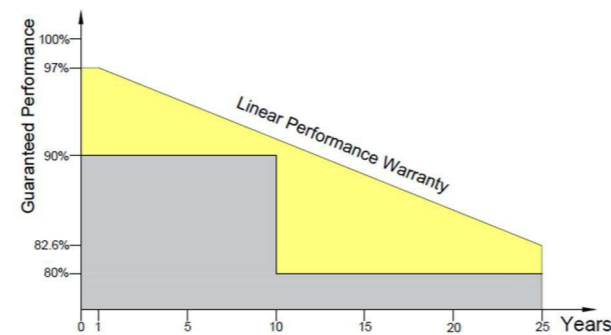
Matching tiles

- Glass type (Uncuttable)



10
Years
Materials

25
Years
Power



Relative efficiency level, at least 97% after first year, annual degradation max.0.6% afterward, at least 91.6% after 10years, and 82.6% after 25years.

Electrical Performance(STC:AM 1.5, 1000W/m², 25°C)

Module Type	ST040M6-20C/V	ST040M6-20C/H
Max. Power (Pmax / Wp)	40	
Power Tolerance	0 ~ +3%	
Max. Power Voltage (Vm / V)	4.43	
Max. Power Current (Im / A)	9.04	
Open Circuit Voltage (Voc / V)	5.34	
Short Circuit Current (Isc / A)	9.51	
Module Efficiency (%)	14.41	14.24
Array Efficiency (%)	16.29	17.51

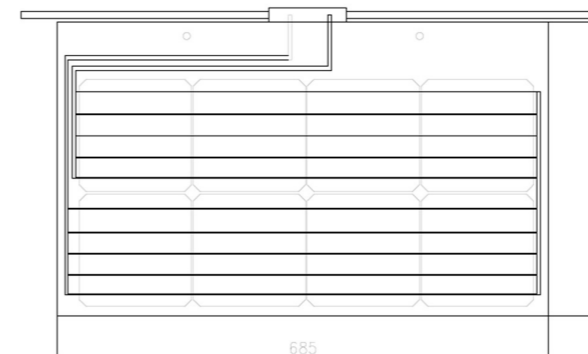
Thermal Properties

Nominal Operating Cell Temp.	45±2 °C
Temperature Coefficient Voc	-0.26%/°C
Temperature Coefficient Isc	+0.056%/°C
Temperature Coefficient Pm	-0.36%/°C

Operation Conditions

Operating Temperature	-40 ~ +85 °C	
Max. System Voltage	1000 V	
Max. Series Fuse Rating	20 A	
Max. Wind & Snow Loads	2400 Pa	5400 Pa
Hail Resistance Class	Class 4 (Ø 40mm at 23m/s)	
Application Class	Class A	
Fire Safety Class	Class A	

Technical Drawing



Mechanical Properties

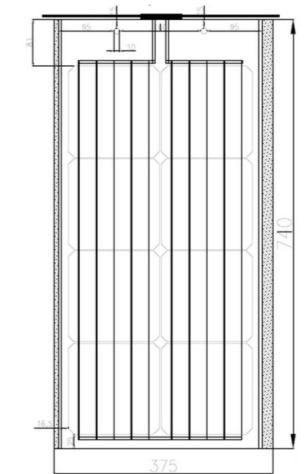
Product Dimensions (mm)	740×375×9(13)	685×410×9(13)
Array Dimensions (mm)	660×372	682×335
Roof Batten Distance (mm)	660~690	335~365
Roof Batten Size (mm)	W & H ≤ 40	
Array Head-lap Size (mm)	50~80	45~75
Weight (Kgs)	5.8	6.0
No. of Cells	8 (2×4)	8 (2×4)
Solar Cells	Monocrystalline 158.75×158.75	
Glass	4+4mm tempered glass	
Frame	Anodized aluminum/Black	
Encapsulation	PVB (UV+/IR+)	
Junction Box	IP 67, 1 bypass diodes	
Cable & Connector	4mm ² , 28/45cm, MC4 compatible	
Roof Pitch Range (°)	15~60	
Units Per Sqrm (pcs/m ²)	4.07	4.38
Power Per Sqrm (Wp/m ²)	163	175

Packing Configuration

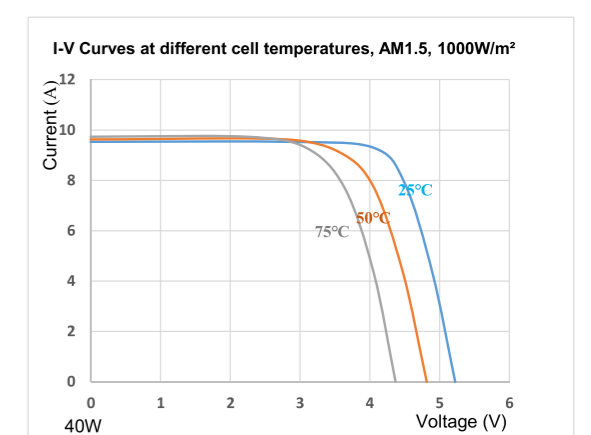
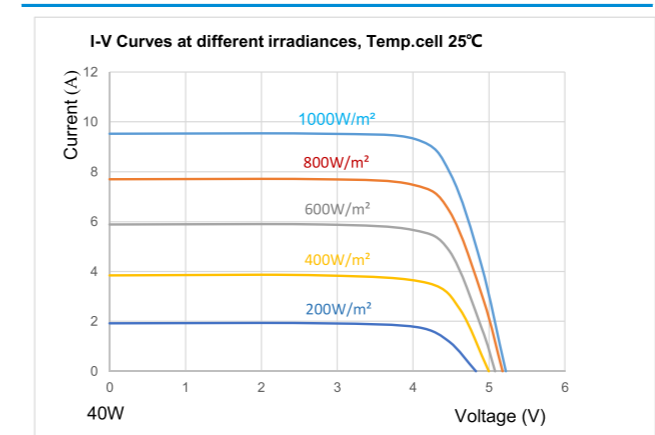
Container Size	20GP	40HQ
Pieces/pallet	120	120
Pallets/Container	26	36
Pieces/Container	3120	4320

Notes

ST040M6-20C-DGXH/V, X=B-Black/G-Grey/T-Transparent, H-Horizontal, V-Vertical



I-V Curves



Monocrystalline & Full Black



Electrical Performance(STC:AM 1.5, 1000W/m², 25°C)

Module Type	ST030M6-36C
Max. Power (Pmax / Wp)	30
Power Tolerance	0 ~ +3%
Max. Power Voltage (Vm / V)	3.35
Max. Power Current (Im / A)	9.04
Open Circuit Voltage (Voc / V)	4.05
Short Circuit Current (Isc / A)	9.51
Module Efficiency (%)	7.63
Array Efficiency (%)	9.09

Thermal Properties

Nominal Operating Cell Temp.	45±2 °C
Temperature Coefficient Voc	-0.36%/°C
Temperature Coefficient Isc	+0.056%/°C
Temperature Coefficient Pm	-0.36%/°C

Operation Conditions

Operating Temperature	-40 ~ +85 °C
Max. System Voltage	1000 V
Max. Series Fuse Rating	20 A
Max. Wind & Snow Loads	2400 Pa 5400 Pa
Hail Resistance Class	Class 4 (Ø 40mm at 23m/s)
Application Class	Class A
Fire Safety Class	Class A

Mechanical Properties

Product Dimensions (mm)	655×600×5(35)
Array Dimensions (mm)	647×510
Roof Batten Distance (mm)	510~530
Roof Batten Size (mm)	W & H≤40
Array Head-lap Size (mm)	70~90
Weight (Kgs)	5.7
No. of Cells	6 (2×3)
Solar Cells	Monocrystalline 158.75× 158.75
Glass	4mm tempered glass
Frame	Anodized aluminum/Black
Encapsulation	EVA (UV+/IR+)
Junction Box	IP 67, 1 bypass diodes
Cable & Connector	4mm ² , 40cm, MC4 compatible
Roof Pitch Range (°)	15~60
Units Per Sqrm (pcs/m ²)	3.03
Power Per Sqrm (Wp/m ²)	90.9

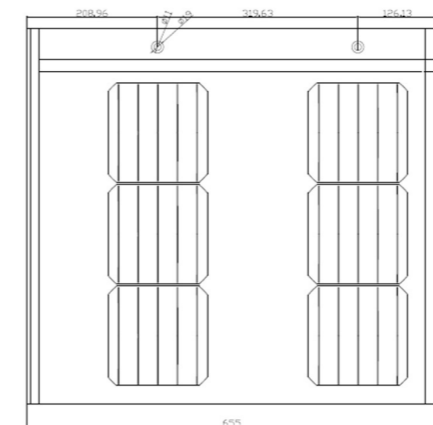
Packing Configuration

Container Size	20GP	40HQ
Pieces/pallet	120	120
Pallets/Container	12	26
Pieces/Container	1440	3120

Notes

ST030M6-36C-SGXW, X=B-Black/G-Gray, W=Wave type

Technical Drawing



Features

- The professional design in waterproof, resist of windstorm & hail
- Low voltages and fireproof materials can prevent any possibility of fire
- Lifespan is over 30 years with reliable encapsulating materials
- Decrease temperature 5~9°C on rooftop with solar tiles
- PID free, yield-optimized low-light performance
- Lightweight, compact and simple to install
- Install on original roof or to be part of it

Accessories

- Sunk screw: M5x20mm
- Sub structure: Wooden slats/steel tubes

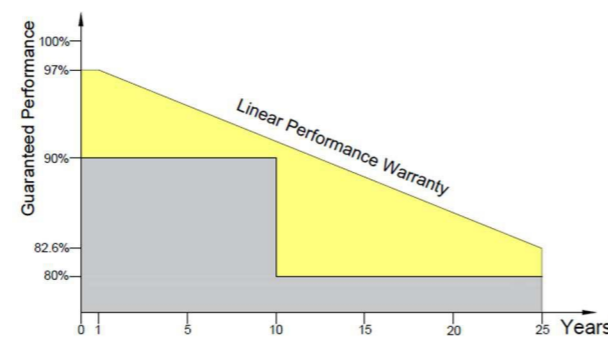
Matching tiles

- Glass type (Uncuttable)



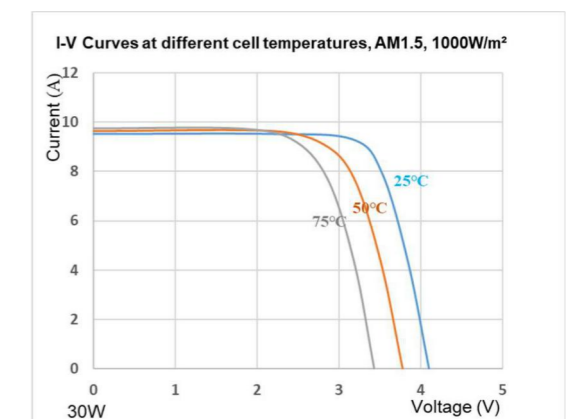
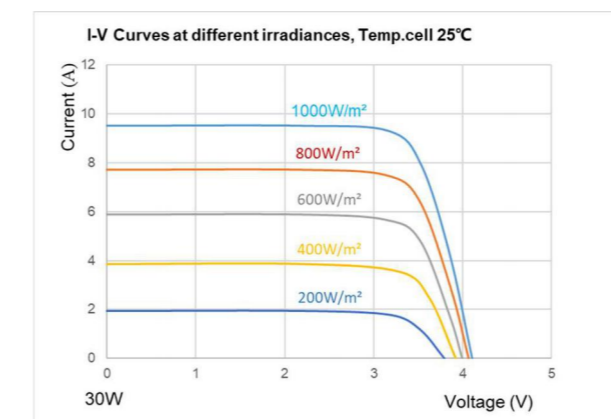
10
Years
Materials

25
Years
Power

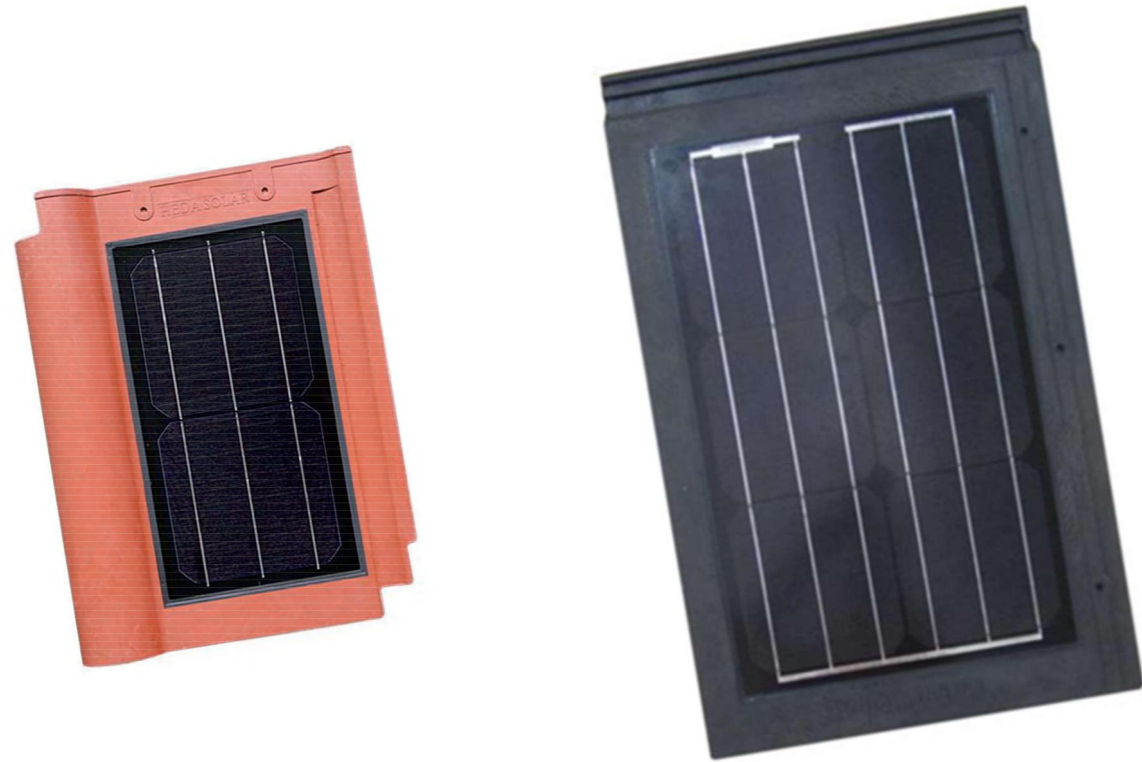


Relative efficiency level, at least 97% after first year, annual degradation max.0.6% afterward, at least 91.6% after 10years, and 82.6% after 25years.

I-V Curves



Monocrystalline



Features

- The professional design in waterproof, resist of windstorm & hail
- Low voltages and fireproof materials can prevent any possibility of fire
- Lifespan is over 30 years with reliable encapsulating materials
- Decrease temperature 5~9°C on rooftop with solar tiles
- PID free, yield-optimized low-light performance
- Ceramic materials, compact and simple to install
- Install on original roof or to be part of it

Accessories

- Sunk screw: M4.8x35mm
- Sub structure: Wooden slats/steel tubes

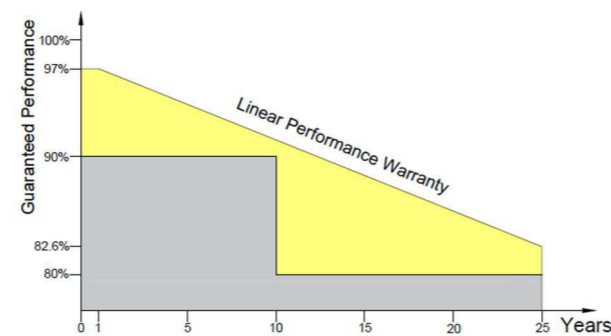
Matching tiles

- Ceramic type (Cuttable)



10
Years
Materials

25
Years
Power



Relative efficiency level, at least 97% after first year, annual degradation max.0.6% afterward, at least 91.6% after 10years, and 82.6% after 25years.

Electrical Performance(STC:AM 1.5, 1000W/m², 25°C)

Module Type	ST010M6-36C	ST030M6-36C
Max. Power (Pmax / Wp)	10	30
Power Tolerance	0 ~ +3%	0 ~ +3%
Max. Power Voltage (Vm / V)	1.11	3.32
Max. Power Current (Im / A)	9.05	9.05
Open Circuit Voltage (Voc / V)	1.34	3.99
Short Circuit Current (Isc / A)	9.51	9.51
Module Efficiency (%)	6.99	10.69
Array Efficiency (%)	9.42	13.15

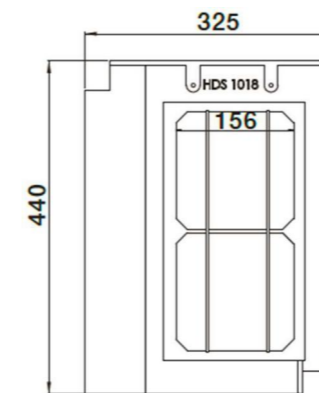
Thermal Properties

Nominal Operating Cell Temp.	45±2 °C
Temperature Coefficient Voc	-0.26%/°C
Temperature Coefficient Isc	+0.056%/°C
Temperature Coefficient Pm	-0.36%/°C

Operation Conditions

Operating Temperature	-40 ~ +85 °C
Max. System Voltage	1000 V
Max. Series Fuse Rating	20 A
Max. Wind & Snow Loads	2400 Pa 5400 Pa
Hail Resistance Class	Class 4 (∅ 40mm at 23m/s)
Application Class	Class A
Fire Safety Class	Class A

Technical Drawing



Mechanical Properties

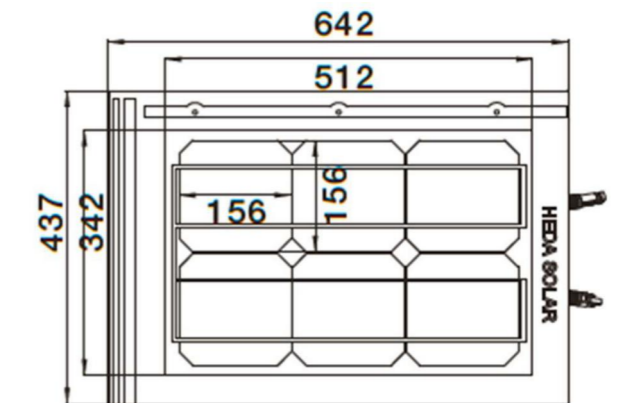
Product Dimensions (mm)	440×325×47	642×437×30
Array Dimensions (mm)	375×283	605×377
Roof Batten Distance (mm)	375~395	377~397
Roof Batten Size (mm)	W & H ≤ 30	
Array Head-lap Size (mm)	45~65	40~60
Weight (Kgs)	2.5	5.2
No. of Cells	2 (1×2)	6 (2×3)
Solar Cells	Monocrystalline 158.75×158.75	
Glass	3.2mm tempered glass	
Frame	Ceramic	
Encapsulation	EVA (UV+/IR+)	
Junction Box	IP 67, 1 bypass diodes	
Cable & Connector	2.5mm ² , 35/45cm, MC4 compatible	
Roof Pitch Range (°)	15~60	
Units Per Sqrm (pcs/m ²)	8.2	4.38
Power Per Sqrm (Wp/m ²)	82	131.4

Packing Configuration

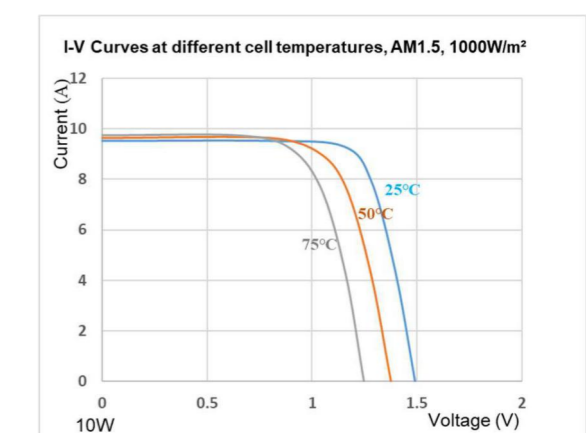
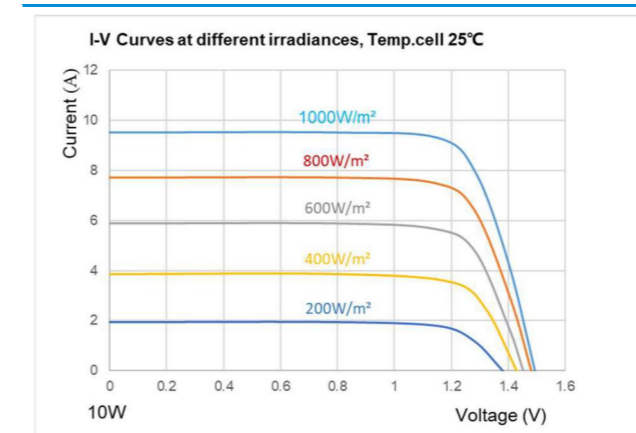
Container Size	20GP	40HQ
Pieces/pallet	180/100	180/100
Pallets/Container	20/16	40/34
Pieces/Container	3600/1600	7200/3400

Notes

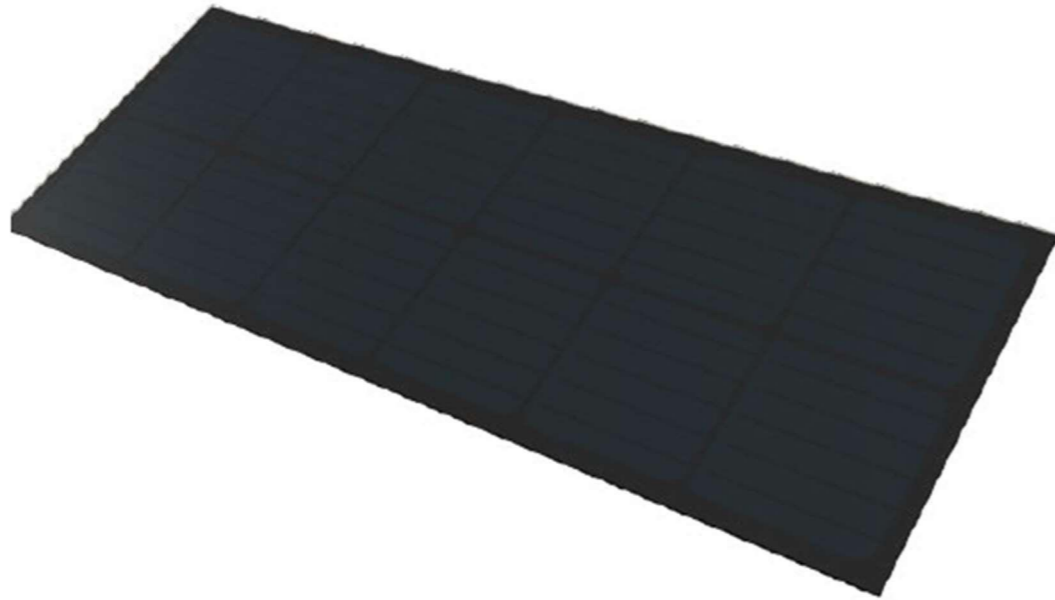
ST010M6-36C-SGXH/V, X=B-Black/R-Red/G-Grey/B-Blue/G-Golden, H-Horizontal, V-Vertical



I-V Curves



Monocrystalline & Full Black



Features

- The professional design in waterproof, resist of windstorm & hail
- Low voltages and fireproof materials can prevent any possibility of fire
- Lifespan is over 30 years with reliable encapsulating materials
- Decrease temperature 5~9°C on rooftop with solar tiles
- PID free, yield-optimized low-light performance
- Double glasses, compact and simple to install
- Install on original roof or to be part of it

Accessories

- Sunk screw: M4.8x30mm
- Sub structure: Wooden slats/steel tubes

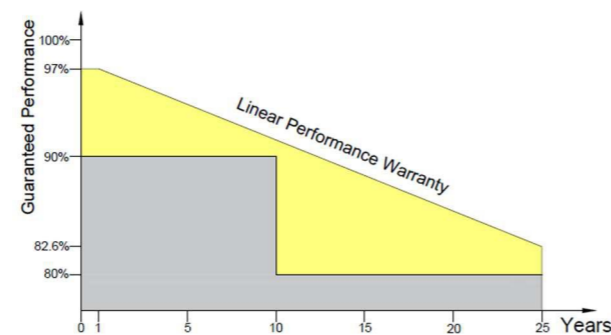
Matching tiles

- Glass type (Uncuttable)



10
Years
Materials

25
Years
Power



Relative efficiency level, at least 97% after first year, annual degradation max.0.6% afterward, at least 91.6% after 10years, and 82.6% after 25years.

Electrical Performance(STC:AM 1.5, 1000W/m², 25°C)

Module Type	ST075M6-36C
Max. Power (Pmax / Wp)	75
Power Tolerance	0 ~ +3%
Max. Power Voltage (Vm / V)	7.76
Max. Power Current (Im / A)	9.66
Open Circuit Voltage (Voc / V)	9.33
Short Circuit Current (Isc / A)	10.20
Module Efficiency (%)	15.86
Aarry Efficiency (%)	18.74

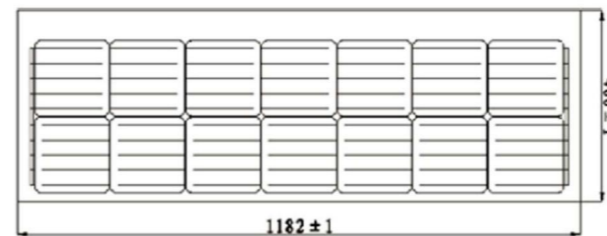
Thermal Properties

Nominal Operating Cell Temp.	45±2 °C
Temperature Coefficient Voc	-0.30%/°C
Temperature Coefficient Isc	+0.05%/°C
Temperature Coefficient Pm	-0.36%/°C

Operation Conditions

Operating Temperature	-40 ~ +85 °C
Max. System Voltage	1000 V
Max. Series Fuse Rating	15 A
Max. Wind & Snow Loads	2400 Pa 5400 Pa
Hail Resistance Class	Class 3 (Ø 23mm at 23m/s)
Application Class	Class A
Fire Safety Class	Class A

Technical Drawing



Mechanical Properties

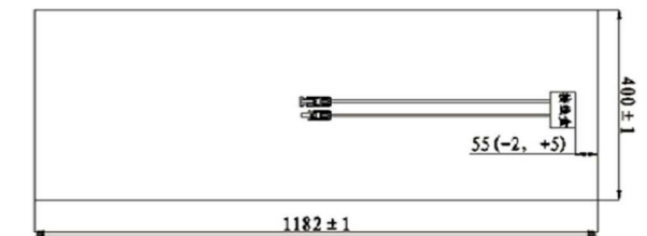
Product Dimensions (mm)	1182×400×7(25)
Array Dimensions (mm)	1177×340
Roof Batten Distance (mm)	340~360
Roof Batten Size (mm)	W & H≤40
Array Head-lap Size (mm)	40~60
Weight (Kgs)	8.5
No. of Cells	14 (2×7)
Solar Cells	Monocrystalline 158.75×158.75
Glass	3.2+3.2mm tempered glass
Frame	/
Encapsulation	EVA (UV+IR+)
Junction Box	IP 67, 1 bypass diodes
Cable & Connector	4mm ² , 80cm, MC4 compatible
Roof Pitch Range (°)	15~60
Units Per Sqrm (pcs/m ²)	2.5
Power Per Sqrm (Wp/m ²)	187

Packing Configuration

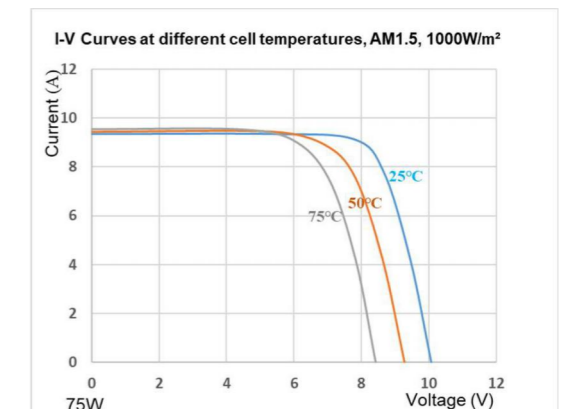
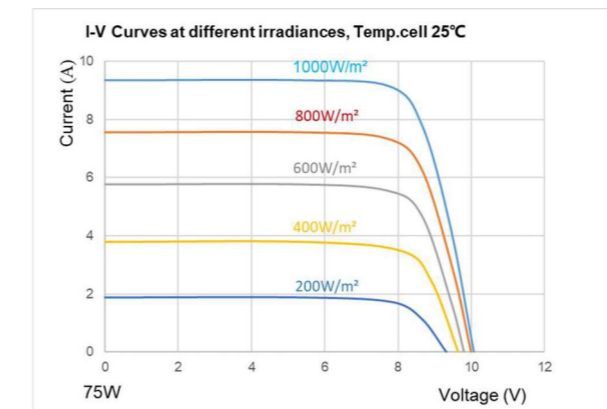
Container Size	20GP	40HQ
Pieces/pallet	80	80
Pallets/Container	24	39
Pieces/Container	1920	3120

Notes

ST075M6-36C-DGXH, X=B-Black/T-Transparent, H-Horizontal



I-V Curves



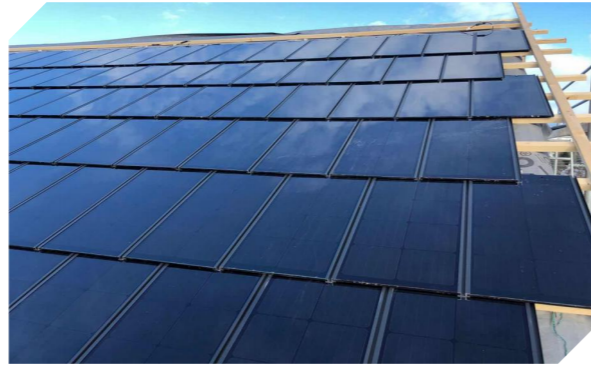
Sentile Series



Hantile Series



Evotile Series



Hedtile Series



Partners



Honors

Certificates



Patents



Software Copyright



Trademarks

©源申泰®(Yosenta), 申泰智家®(Senta Home), 申泰锂电®(Senta Power)
 ©申泰智通®(Senta Link), 申泰智耕®(Senta Farm), 申泰智舱®(Senta House)



Softworks



Qualification

"National High and New Technology Enterprise"

"Private Science and Technology Enterprise of Jiangsu Province"

"Small and Medium-sized Technology-based Enterprise"

"Eyas Class III Enterprises"